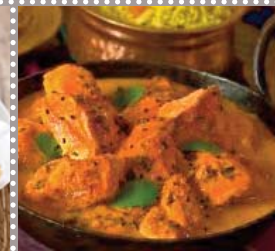




Eating Out  
TEWKESBURY

AN EXTRAORDINARY  
RIVERSIDE TOWN

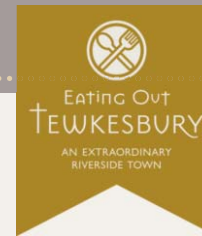
# Eating Out in TEWKESBURY



YOU'LL FIND PLENTY OF CHOICE FOR YOUR DINING EXPERIENCE IN TEWKESBURY, FROM CONTEMPORARY INTERNATIONAL CUISINE AND TRADITIONAL TUDOR PUBS TO QUIRKY COFFEE HOUSES. WHATEVER YOU'RE CRAVING, WE'VE GOT IT COVERED THROUGH BREAKFAST, LUNCH AND DINNER.

[www.visittewkesbury.info](http://www.visittewkesbury.info)

LOCAL  
GUIDE  
2018



## RESTAURANTS



**The Bell Hotel**, Church Street, GL20 5SA.

Phone: 01684 293293

Traditional English restaurant and bar.

Food served daily 11am-10pm. **DW, DA**

**Crystal Rivers**, 117-118 High Street, GL20 5JY.

Phone: 01684 295226

[www.crystalriversdining.co.uk](http://www.crystalriversdining.co.uk)

Traditional Indian and Bangladeshi restaurant, takeaway and delivery. Open daily 6pm-11pm.

**Eastern Eye**, 21 Barton Street, GL20 5PR. Phone: 01684 290668

[www.theeasterneyetandoori.co.uk](http://www.theeasterneyetandoori.co.uk)

Balti tandoori and curry specialists. Open daily 5.30pm-late.

**Great Wall**, 17 High Street, GL20 5AL. Phone: 01684 292046

Malaysian/Chinese. Sun 5pm-10.30pm. Tue 12 noon-2pm & 5pm-11pm. Fri-Sat 12 noon-2pm & 5pm-11.30pm.

**My Great Grandfathers**, 84 Church Street, GL20 5RX. Phone: 01684 292687

[www.mygreatgrandfathers.co.uk](http://www.mygreatgrandfathers.co.uk)

British modern, fine local produce. Mon-Sat 6pm-11pm.

**Panache Indian Restaurant**, 61 High Street, GL20 5BJ. Phone: 01684 299584

[Facebook.com/Panache Indian](https://www.facebook.com/PanacheIndian).

Indian cuisine. Mon-Sun 12 noon-2pm & 5pm-11.30pm.

**Nirala Tandoori**, 69-70 Church Street, GL20 5RX.

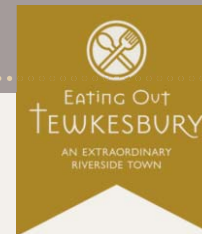
Phone: 01684 274657 [www.niralatandoori.co.uk](http://www.niralatandoori.co.uk)

Indian cuisine. Sun-Thu 5.30pm-11.30pm. Fri-Sat 5.30pm-Midnight.

**Rajbari**, 29 Barton Street, GL20 5PR. Phone: 01684 298962

[Facebook.com/Rajbaritewkesbury](https://www.facebook.com/Rajbaritewkesbury)

Bangladeshi cuisine. Open daily 12noon-2.30pm and 5.30pm-11pm.



**Rajshahi**, 121 High Street, GL20 5JU. Phone: 01684 273727

[www.rajshahirestaurantltd.co.uk](http://www.rajshahirestaurantltd.co.uk)

Indian, Bengali, cuisine. Open daily 6pm-late. Sun-Thurs 6pm-11pm and Fri + Sat 6pm - late **DA**, **GF**, **VT**, **V**

**Salerno**, 66 Church Street, GL20 5RX. Phone: 01684 850614

[www.salernoitalianrestaurant.co.uk](http://www.salernoitalianrestaurant.co.uk)

Italian restaurant. Mon-Sat 12 noon-2.30pm & 5pm-10.30pm. Sun 12 noon-9.30pm. **DA**

**Tewkesbury Park Hotel**, Lincoln Green Lane, GL20 7DN. Phone: 01684 272300

[www.tewkesburypark.co.uk](http://www.tewkesburypark.co.uk)

**Garden restaurant**: 6pm-9.15pm.

**Greens restaurant**: Informal light meals and snacks. Mon-Fri 7am-9pm, Sat & Sun 7am-10pm

**The Abbot's Table**, 73 Church Street, GL20 5RX. Phone: 01684 297878

[www.theabbotstable.co.uk](http://www.theabbotstable.co.uk)

Restaurant with a menu offering a modern European twist.

Mon 6pm-11pm. Tues-Sat 12noon-2.30pm and 6pm-11pm. Sun 11am-3.30pm.

**Theoc House**, 85 Barton Street, GL20 5PY. Phone: 01684 296562

[www.theochouse.co.uk](http://www.theochouse.co.uk)

Café, lounge & bar. Fresh food and seasonal menus. Open daily 8.30am-11pm.

**Turquaz Artisan Grill**, 43 High Street, GL20 5BH. Phone 07982 972555

[www.turquazonline.co.uk](http://www.turquazonline.co.uk)

Turkish takeaway. Open daily 4.30pm-11pm

**Zitto e Mangia**, 25 High Street, GL20 5AT.

Phone: 01684 297017

[www.zittoemangia.co.uk](http://www.zittoemangia.co.uk)

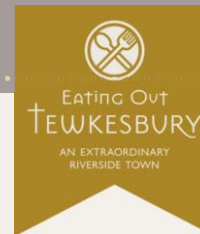
Italian restaurant. Mon-Fr 5.30pm-10pm.

Sat 12 noon-10.30pm.



**DW** - dogs welcome    **DT** - disabled toilets    **VT** - vegetarian

**DA** - disabled access    **GF** - gluten free    **V** - vegan



## TEAROOMS AND CAFÉS



**Abbey Tea Rooms**, 59 Church Street, GL20 5RZ. Phone: 01684 292215  
[www.abbeytearoomsandrestaurant.co.uk](http://www.abbeytearoomsandrestaurant.co.uk)  
Tea rooms and licensed restaurant.  
Mon, Thurs, Fri 10am-4pm. Sat 10am-5pm,  
Sun 12 noon-4pm.

**Caffé e Vino**, 89 Church Street, GL20 5RX.  
Phone: 01684 290601 [www.cafevino.eu](http://www.cafevino.eu)  
Italian café and lunch bar, Tues-Sun 9.30am-  
4.30pm. [www.cafevino.eu](http://www.cafevino.eu) DW

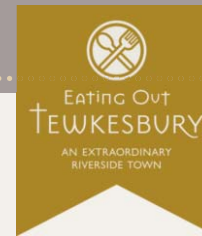
**Café au Chocolat**, 137 High Street, GL20 5JR. Phone: 01684 275332  
[www.cafe-au-chocolat.co.uk](http://www.cafe-au-chocolat.co.uk)  
Coffee shop and cakes. Mon-Fri 8.30am-5.30pm, Sat 9am-6pm, Sun 9.30am-5pm. DW, DA

**The Carousel**, 112 High Street, GL20 5JY. Phone: 01684 292922  
[www.thecarouseltewkisbury.co.uk](http://www.thecarouseltewkisbury.co.uk)  
Sweet shop, ice cream parlour and tea parlour. Mon-Sat 9.30am-5pm. DW, DA, GF, VT, V

**Coffee#1**, 26-29 High Street, GL20 5AT. Phone: 01684 297381 [www.coffee1.co.uk](http://www.coffee1.co.uk)  
Coffee, cakes and snacks. Mon-Sat 8am-6pm, Sun 9am-5pm.

**Costa coffee**, 95-96 High Street, GL20 5JZ. Phone: 01684 295433 [www.costa.co.uk](http://www.costa.co.uk)  
Coffee, cakes and snacks. Mon-Sat 6.30am-7.30pm, Sun 8am-6.30pm. GF, V, VT, DA, DT

**Crumpets**, St Marys Lane, GL20 5SL. Phone: 01684 292906  
[www.crumpetstewkesbury.com](http://www.crumpetstewkesbury.com)  
Café, coffee and cake. British home cooked food. Tue-Fri 10.30am-4pm, Sat 10am-4pm  
DA, VT, GF



**Greggs**, 11a High Street, GL20 5AL. Phone: 01684 295377

[www.greggs.co.uk](http://www.greggs.co.uk)

Breakfast, light lunches and snacks. Mon-Fri 7am-4pm. Sat 7.30am-5pm.

**Jelly Roll Café**, 17 Barton Street, GL20 5PP. Phone: 01684 292322

[Facebook.com/JellyRoll-Cafe](https://www.facebook.com/JellyRoll-Cafe)

Homemade breakfast, light lunch, tea, takeaway and specials board. Mon-Sat 8.30am-4pm, Sun 9.30am-3.30pm (times can vary). DW, DA, GF, VT, V

**Melanie's**, 49 High Street, GL20 5BH. Phone: 01684 274433

Breakfast, lunch and snacks. Traditional, home cooked, gluten free cakes, breads and scones, Mon-Sat 9.30am-4.30pm. GF, DA, DT, DW

**Tilly's of Tewkesbury**, 83 Barton Street, GL20 5PY. Phone: 01684 275068

[Facebook.com/Tillys-of-Tewkesbury](https://www.facebook.com/Tillys-of-Tewkesbury). Tea room and licensed eating house.

Mon-Sat 8am-5pm, Sun 10am-4pm. GF, VT, V, DA, DT,

**Touching Souls Tea Room**, Tewkesbury Abbey, GL20 5RZ. DA, DT

Phone: 01684 850959 [www.tewkesburyabbey.org.uk/touching-souls-tea-room](http://www.tewkesburyabbey.org.uk/touching-souls-tea-room).

Homemade cakes, scones and light lunches. Mon-Fri 10.45am-1.45pm, Sat 10.30am-3pm, Sun 1.30pm-4pm.

**1471 Delicatessen**, 101 Church Street, GL20 5AB. Phone: 01684 291471

[www.ad1471.co.uk](http://www.ad1471.co.uk)

Deli, drinks, pastries and chocolate. Mon-Fri 9am-5pm, Sat 8.30am-5pm. DW, DA, VT

**Cotteswold Coffee at the Roses Theatre**,

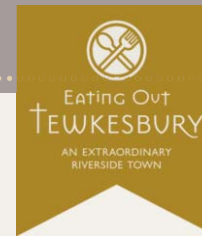
Sun Street, GL20 5NX.

[www.rosestheatre.org](http://www.rosestheatre.org)

Coffee and light snacks. Mon-Sat 9.30am-7.30pm when a show is on - otherwise Mon-Sat 9.30am-5.30pm. Sunday open an hour before show starts.



DW - dogs welcome   DT - disabled toilets   VT - vegetarian  
DA - disabled access   GF - gluten free   V - vegan



## PUBS



**Tudor House Hotel**, 51 High Street,  
Phone: 01684 297755  
[www.tudorhouse.relaxinnz.co.uk](http://www.tudorhouse.relaxinnz.co.uk)  
Traditional English pub and bar snacks. Open  
11am-11pm Mon-Sat, 12 noon -10.30pm Sun.  
**Coffee shop and secret garden** - teas,  
coffees and cream tea. Mon-Sun 9am-4pm. **DA**

.....

**The Berkeley Arms**, 8 Church Street,  
GL20 5PA. Phone: 01684 290555  
[www.berkeleyarmstewkesbury.co.uk](http://www.berkeleyarmstewkesbury.co.uk)  
Pets welcome, traditional home-cooked food.

.....

Open 10.30am-midnight Mon-Sat, 11.30am - midnight Sun. **DW, GF, VT**

.....

**Elmbury Lodge**, Shannon Way, GL20 8ND. Phone: 01684 278680  
[www.brewersfayre.co.uk](http://www.brewersfayre.co.uk) Brewers Fayre pub food.  
Mon-Fri 6.30am-11pm, Sat 7am-11pm, Sun 7am-10.30pm. **DA, DT, GF,**

.....

**Gupshill Manor**, Gloucester Road, GL20 5SY. Phone: 01684 292278  
[www.gupshillmanor.com](http://www.gupshillmanor.com)  
British gastro pub and restaurant. Open Mon - Fri 9am-10pm and Sat 10am-midnight, sun  
10am-10pm. Dogs allowed in bar area only. **DA, DT, GF, VT, V,**

.....

**The Anchor**, 42 High Street, GL20 7SR. Phone: 01684 293625  
Dog friendly, traditional pub food.

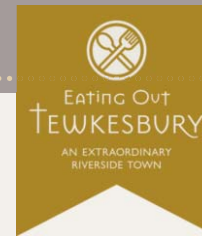
.....

**The Canterbury**, 18 Ashchurch Road, GL20 8BT. Phone: 01684 438463  
Traditional pub food.

.....

**The Wheatpieces**, 2 Clifford Avenue, Walton Cardiff, GL20 7RW.  
Phone: 01684 274420. [www.hungryhorse.co.uk/locations/wheatpieces](http://www.hungryhorse.co.uk/locations/wheatpieces)  
Hungry Horse pub food. Open late Fri and Sat.

.....



**The Fleet Inn**, Twynning, GL20 6FL. Phone: 01684 274020  
[www.thefleetattwynning.co.uk](http://www.thefleetattwynning.co.uk)  
Traditional riverside inn.

**Lower Lode Inn**, Forthampton, GL19 4RE. Phone: 01684 293224  
[www.lowerlodeinn.co.uk](http://www.lowerlodeinn.co.uk)  
15th century riverside inn, locally sourced food and carvery.

**Nottingham Arms**, 129 High Street, GL20 5JU. Phone: 01684 276346  
Traditional English pub food and ale. Open 11am-11pm Mon - Tues and 11am-12pm Fri and Sat, **DW**, **DA**

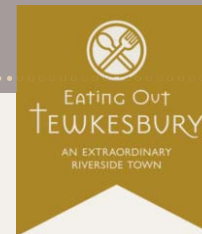
**The Britannia**, 30 High Street, GL20 5AT. Phone: 01684 291811  
Traditional pub food.

**The Royal Hop Pole Hotel**, 94-96 Church Street, GL20 5RS.  
Phone: 01684 274039. [www.jdwetherspoon.com](http://www.jdwetherspoon.com)  
Wetherspoon pub food. Open daily 7am-11pm. **DA**, **DT**, **GF**, **VT**, **V**

**The Boathouse**, Mythe Road, GL20 6EB. Phone: 01684 275714  
[www.theboathousepub.co.uk](http://www.theboathousepub.co.uk)  
Riverside dining and eatery, traditional food and carvery.



**DW** - dogs welcome    **DT** - disabled toilets    **VT** - vegetarian  
**DA** - disabled access    **GF** - gluten free    **V** - vegan



## TAKEAWAYS



**The Fishnet**, 116 High Street, GL20 5JY.

Phone: 01684 276186

[Facebook.com/TheFishnetTewkesbury](https://www.facebook.com/TheFishnetTewkesbury)

Fish and chips. Open 12noon-8pm

**Abbey Fryer**, 69 Barton Street, GL20 5PY.

Phone: 01684 292365 Fish and chips. Open

Mon-Sat 11.30am-2pm and 4.30pm-10pm, Sun

4pm-11pm. [Facebook.com/Abbey-Fryer](https://www.facebook.com/Abbey-Fryer)

**Kingfisher**, 1 Quay Street, GL20 5BE.

Phone: 01684 293220 [www.kingfisher-restaurant.com](http://www.kingfisher-restaurant.com)

Fish and chips. Open 11.45am-2pm,

Mon - Wed and Fri.

**Best Kebab Takeaway**, 98 Church Street, GL20 5RS. Phone: 01684 291151

Kebabs, burgers and pizza.

**Glory Gardens**, 8 Columbine Road, GL20 7SP. Phone: 01684 298288

Cantonese Chinese takeaway.

**Subway**, 46 High Street, GL20 5BH. Phone: 01684 297494 [www.subway.co.uk](http://www.subway.co.uk)

Fresh sandwiches, salads and snacks. Open Mon - Fri 7.30am-8pm Sat 8am-8pm, Sun

9.30am-7pm.

**Peri Passion**, 2 Church Street, GL20 5PA. Phone: 01684 291512.

[Facebook.com/PeriPassion](https://www.facebook.com/PeriPassion) Chicken, pizza and burgers.

**Hing Wah**, 12 Barton Street, GL20 5PP. Phone: 01684 292373 Chinese cuisine.

**Lotus**, 42-43 Barton Street, GL20 5PR. Phone: 01684 293851 Chinese cuisine.

**Domino's**, 102 High Street, GL20 5JZ. Phone: 01684 273337

[www.dominos.co.uk](http://www.dominos.co.uk) Pizza.

**Chicago Pizza**, 58 -59 High Street, GL20 5BJ. Phone: 01684 275500

[www.thechicagopizza.co.uk](http://www.thechicagopizza.co.uk) Pizza delivery. Open Tues-Sun. Closed Mon